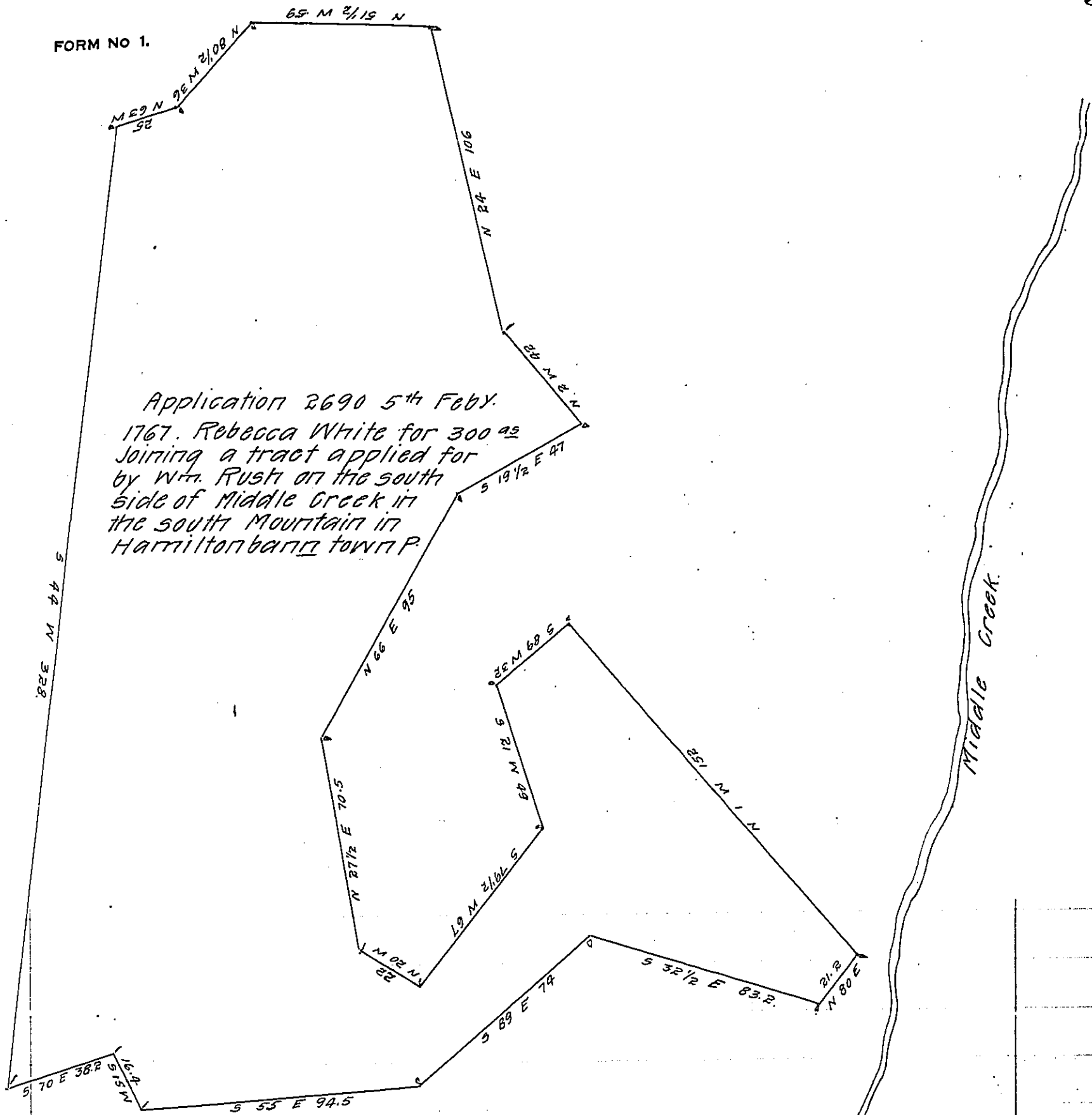


FORM NO 1.



Application 2690 5th Feb'y.
 1767. Rebecca White for 300^{ac}
 Joining a tract applied for
 by Wm. Rush on the south
 side of Middle Creek in
 the south Mountain in
 Hamiltonbarr township

Wm Rush.

In pursuance of the several Acts of Assembly directing the recovery of the principal and interest due to the Commonwealth from persons holding lands by virtue of Locations or other office Titles issued from or under the proprietary Government and for other purposes, I have this day located and surveyed Applicⁿ 2690 granted 5th Feb'y. 1767 to Rebecca White for 300^{ac} on the south side of Middle Creek in the South mountain in Hamiltonbarr township on lands situate as aforesaid, and have found the Interferences as represented in the enclosed diagram. Witness my hand.

Jan'y. 25th 1838.

Jno. L. Gubernator

IN TESTIMONY that the above is a copy of the original remaining on file in the Department of Internal Affairs of Pennsylvania, made conformably to an Act of Assembly approved the 16th day of February, 1833, I have hereunto set my Hand and caused the Seal of said Department to be affixed at Harrisburg, this twenty-ninth day of September 1908.

Henry Houck
 Secretary of Internal Affairs.